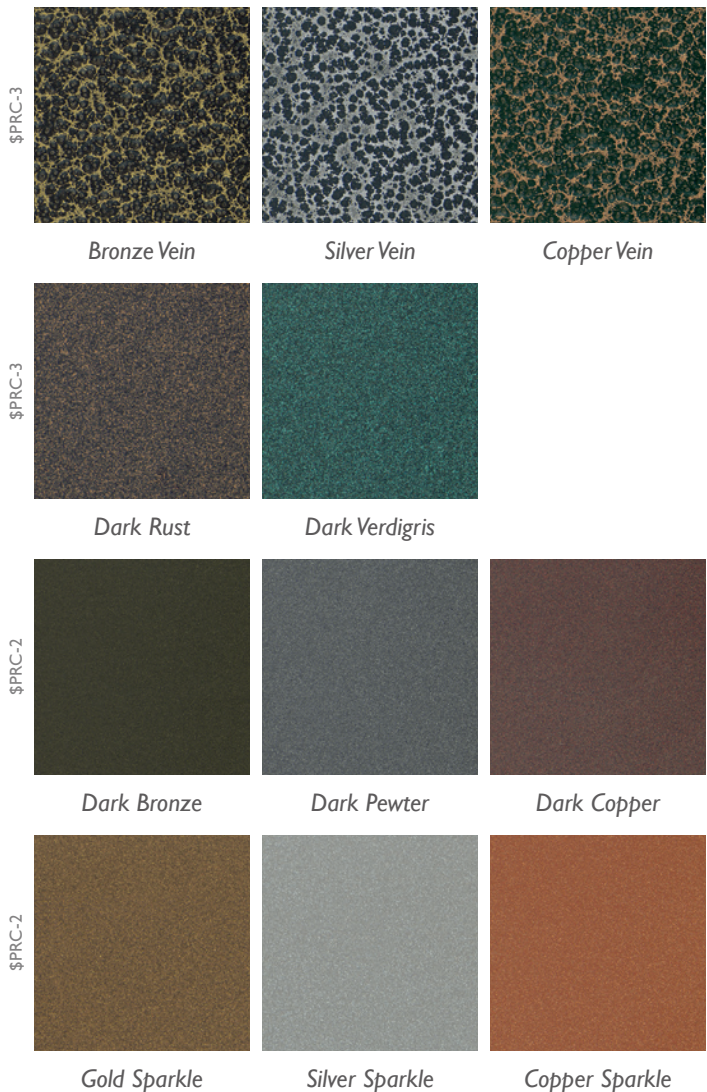


CI SPIRAL COLORS

POWDER COAT COLORS

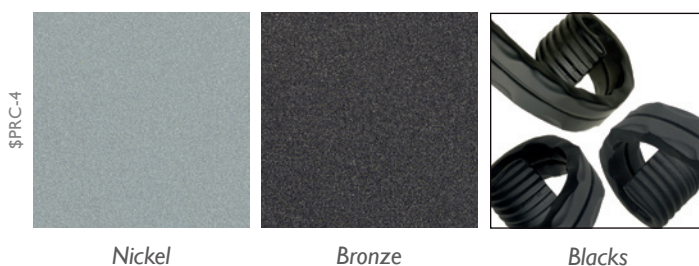


Choose durable powder colors from a collection of sizzling metallics or classic neutrals.



LIQUID PAINT COLORS

CUSTOM COLORS



In addition to Nickel and Bronze, these basic black paints are available in liquid: Black Primer, Black Satin, Black Flat.
(Black Primer = \$PRC-1)



Select from our vendor stock colors, or provide a sample swatch for a custom mix. Available in liquid, powder and faux finishing. Prices vary.

Colorize it!

CI SPIRAL COLORS

OIL-RUBBED



Oil-Rubbed Bronze on Bronze



Oil-Rubbed Bronze



Oil-Rubbed Pewter



Oil-Rubbed Copper

Finishes from rustic to rich

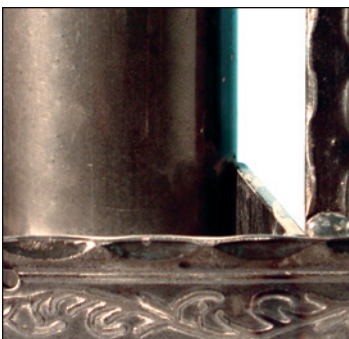
Powder coat base for overall durability. Hand-applied metallic highlights for an authentic look of aged and rubbed metals. Choose the flat black color with Bronze, Pewter, or Copper highlights for a traditional oil-rubbed finish. Or, choose the Dark Bronze base color with Bronze highlights for oil-rubbed with a twist – we call this “oil-rubbed bronze on bronze”.

For spirals, all parts will be powder coated black (or bronze) and highlights applied to balusters only.



\$PRC-5

SPIRAL ANTIQUE NATURAL



For spiral stairs and the companion railings, we offer an “antiqued iron” finish using liquid clear coat with added pigment.

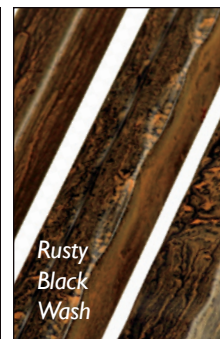
NOTE: This pigmented clear finish is offered for spirals because clear coat options for railings (including powder, liquid, and wax finishes) are not suitable for the disparate materials in spiral construction.

\$PRC-5

ARTIFACT WASH



Dark Verdigris Wash



Rusty Black Wash

We create each Artifact Wash color through a combination of paints that will mimic natural metal corrosion. Results vary according to the product to which they are applied.

\$PRC-6

Due to the complex finishes offered, as well as paper and ink variations in the print process, the colors as shown may vary from actual finishes. Do not use this printed brochure as your source for accurate specification. Please request a sample before making your final selection and before placing an order.



CUSTOM IRON

strength in creative metals

400 First Street East | Zumbrota, Minnesota 55992
 ph 800.732.7699 | fax 507.732.7837 | www.customiron.com