

TOP BAR PANEL INSTALLATION



We're the metalsmiths so you don't have to be. Custom Iron panels are designed and engineered so installation time is reduced by up to 50%. Hand-crafted railings, easy installation. Follow these simple steps.

Check template, mark and drill
Step 1. Locate and mark the mounting holes using the templates included with the hardware kit. Each template represents the location of the components within each panel. Check that each template matches the actual panels before drilling the holes. Adjust the space between the templates/panels to accommodate the stair's run specifications.

Step 2. After holes are marked correctly, drill the holes. If the hole depth is deeper than the tread thickness, support blocking will be needed to contain the epoxy.

Set primary panels
Step 3. Locate the primary panels: top, bottom, level, and any transition panels. Adjust the panels for height and plumb to the handrail. Lock the panel height using the set screws in the bases.

Add handrail

Step 4. Clamp the handrail or a straight edge to the panels and adjust the panel height as needed. It is best to use a stiff expendable material (such as a piece of wood) as a straight edge for this step so the clamps do not damage the handrail, however, in some cases the handrail must be used (i.e. curving stairs). If using a metal handrail, place center panels at this time to prevent the handrail from sagging. DO NOT permanently attach handrail at this time.

Add epoxy

Step 5. Remove the handrail and panels. Add epoxy to the holes and re-insert the panels and handrail. (Epoxy and gun may be purchased from Custom Iron.) The epoxy should start to set within about 7 minutes.

Attach handrail

Step 6. Metal handrail option – Use the commercial drill bit that came with the metal handrail hardware kit to drill through the metal handrail and the top bar of the panels.

Step 7. Use rivets included with the metal handrail kit to secure the handrail to the panels. Use a riveting tool (which may be purchased or rented from Custom Iron) to secure the rivets.

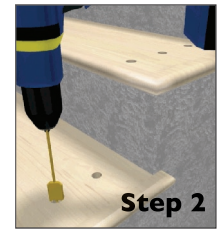
Step 8. Wood handrail option – Use screws to secure the wood handrail to the panels.

Simple. Beautiful. Economical. Custom Iron top bar panels... what a concept.

Note: These instructions are meant as a guideline. Your site conditions may dictate variations to these instructions.



Step 1



Step 2



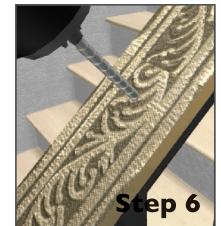
Step 3



Step 4



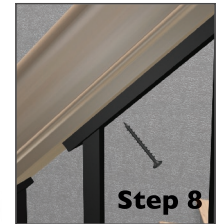
Step 5



Step 6



Step 7



Step 8



CUSTOM IRON

strength in creative metals

800.732.7699

www.customiron.com