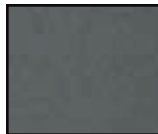
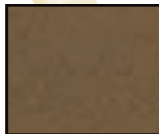
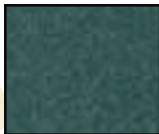
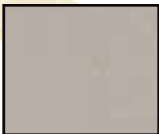
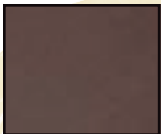
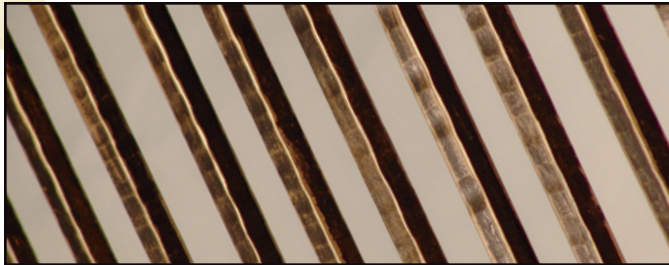
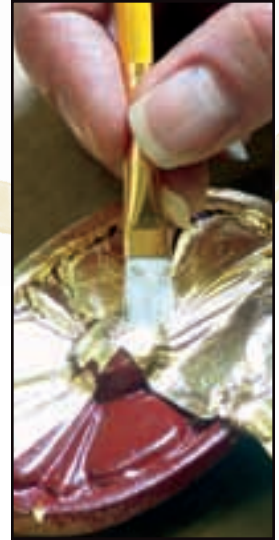


# CUSTOM IRON FINISHES

## PREMIUM FINISHES

Custom Iron finishes (powder coatings, liquid paints, and more) add color and character to your metal product. We offer a versatile range of metallic coatings and classic solid colors to enhance any décor.

Customize your next project with one of our quality finishes.



powder coat

*liquid*

specialty

*oil-rubbed*

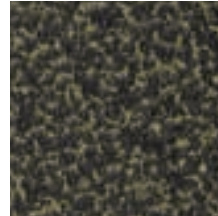
custom

# POWDER COAT FINISHES

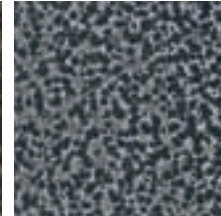
## Veins

Vein textures in classic metallic hues of Bronze, Silver, and Copper.

All of our vein coatings have a clear topcoat added for satin sheen and for tarnish protection.



Bronze Vein



Silver Vein

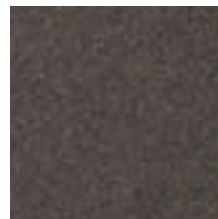


Copper Vein

## Artifact

A powder coat alternative to weathered wash finishes done with liquid paints.

Both Rust and Verdigris have a slight texture.



Dark Rust



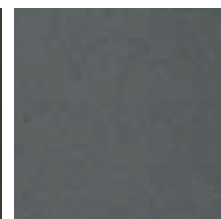
Dark Verdigris

## Glimmer

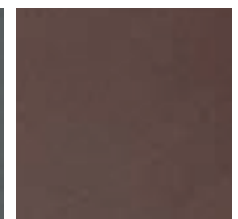
Smooth, deep tones with a rich, metallic glimmer.



Dark Bronze



Dark Pewter



Dark Copper

*Powder coat colors are baked on for a durable and long-lasting finish*

# POWDER COAT FINISHES



Gold Sparkle

Silver Sparkle

Copper Sparkle



## Sparkle

Smooth, multi-pigmented metallics with sparkle.



Light Bronze

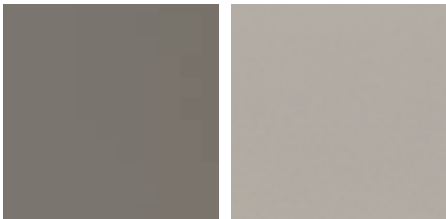
Light Pewter

Light Copper



## Softglow

Smooth, soft hues for a serene, metallic luster.



Terra

Sand



## Earthtone

Non-textured warm earthtones of Terra (glossy) and Sand (satin).

# POWDER COAT NEUTRALS

## Blacks

Three gloss sheen levels: high-gloss, satin & flat. Our standard black is the satin sheen.

Textured wrinkle in rich black.



## Whites

Bright glossy white or soft satin white.



## Clear Coat\*

Clear coats are often requested to highlight the worked metal that we produce. For maximum clear coat durability, we offer a powder coat clear in matte or glossy finish.



\* Clear coatings are not suitable for all products. Please inquire about the suitability of any of our clear finishes for your particular order.

*Possibilities from classic to custom, with options in powder and liquid*

# LIQUID & CUSTOM COLOR

## Liquid Paint Options

Liquid coatings are a thinner mill thickness than powder coatings. The thinner liquid coating works best to showcase textures on forged metal products.

### Clear Coat

Prior to clear coating, the substrate can be treated by removing small amounts of the mill scale for textural highlights, or by blasting off all mill scale for a rough, light gray appearance.

### Classic Metallics

Our popular Nickel and Bronze liquid paints will complement your hardware and fixtures.

### Blacks

These basic black paints are available in liquid: Black Primer, Black Satin, Black Flat.



CLOCKWISE FROM UPPER LEFT: *Matte Clear on standard, Glossy Clear on standard, Matte Clear on blasted, Matte Clear on highlighted*



Nickel



Bronze



Blacks



Matte Clear on blasted

## Custom Color Options

### Powder non-stock

Choose a non-stock color that is available from one of our preferred powder suppliers. In most cases, we can find an available color very similar to your sample.

### Liquid non-stock

Previously stocked liquid colors that are no longer a standard item can be requested as a non-stock color.

### Powder Custom Mix

If you're looking for a more exact match in a powder color, a custom mix can be created just for you. Custom mixes require a large minimum order from the vendor and additional lead time.

### Liquid Custom Mix

Liquid custom mixes are an economical alternative if you're seeking a color match.



Select your favorite color from our preferred -vendor stock colors, or provide a sample color swatch and get a custom mix. Prices vary.

# SPECIALTY FINISHES

## Spiral Antique Natural

Spiral Antique Natural is a pigmented liquid clear coat option that helps “blend” the dissimilar materials of a spiral stair into an overall look of antiqued iron. This option is offered because standard clear coats are unsuitable for spiral stairs.



## Artifact Wash

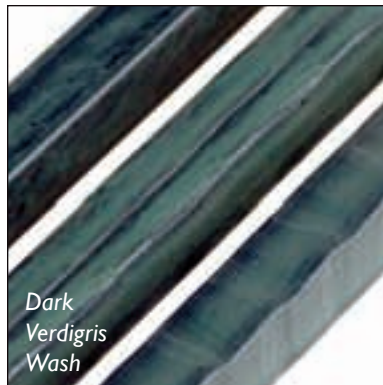
We create each Artifact Wash color through a combination of paints that will mimic natural metal corrosion. Artifact Wash results will vary according to the product to which they are applied.



Dark Verdigris Wash



Rusty Black Wash



Dark  
Verdigris  
Wash



Rusty  
Black  
Wash

*Specialty finishes from rustic to rich*

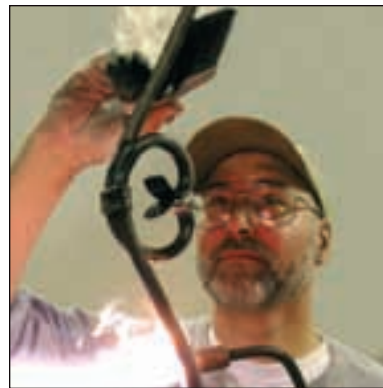


The variations in the Spiral Antique Natural and Artifact Wash finishes are inherent in the complex nature of the processes. These variations produce the desired “natural” or “weathered” looks.

# SPECIALTY FINISHES

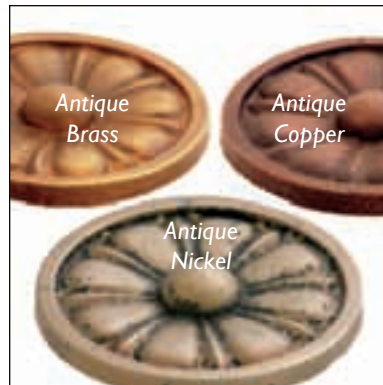
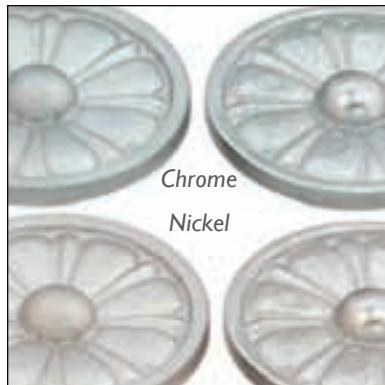
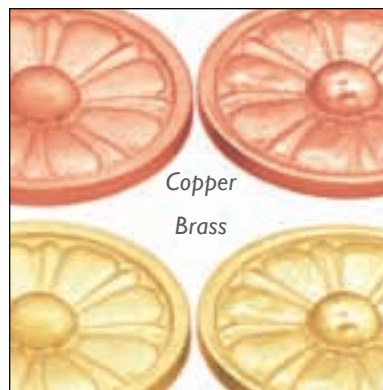
## Wax

For the ultimate natural finish that celebrates the rugged beauty of metal, choose our Wax finish, which is very durable and easily maintained. To create a Wax finish, the piece is heated and the wax is then applied. *Not available on spirals.*



## Plating

Metal plating adds spark and interest to railing ornamentation. Polished and unpolished plating are available in: Brass, Gold, Chrome, Nickel, Silver, and Copper. Aged plating effects are available in Antique Bronze, Antique Nickel, and Antique Copper.



## Gilding

In the traditional manner, 22 or 24-carat gold leaf is lightly rubbed on to the surface of the piece. This method highlights the surface texture and adds unique appeal.



# OIL-RUBBED OPTIONS

## Oil-Rubbed

Powder coat base for overall durability. Hand-applied metallic highlights for an authentic look of aged and rubbed metals. Choose the Flat Black base color with Bronze, Pewter, or Copper highlights for a traditional oil-rubbed finish. Or, choose the Dark Bronze base color with Bronze highlights for oil-rubbed with a twist.



*Hand-applied oil-rubbed finishes for old world flavor*

Due to the complex finishes offered, as well as paper and ink variations in the print process, the colors as shown may vary from actual finishes. Do not use this printed brochure as your source for accurate specification. Please request a sample before making your final selection and before placing an order.



**CUSTOM IRON**

strength in creative metals

400 First Street East | Zumbrota, Minnesota 55992  
ph 800.732.7699 | fax 507.732.7837 | [www.customiron.com](http://www.customiron.com)